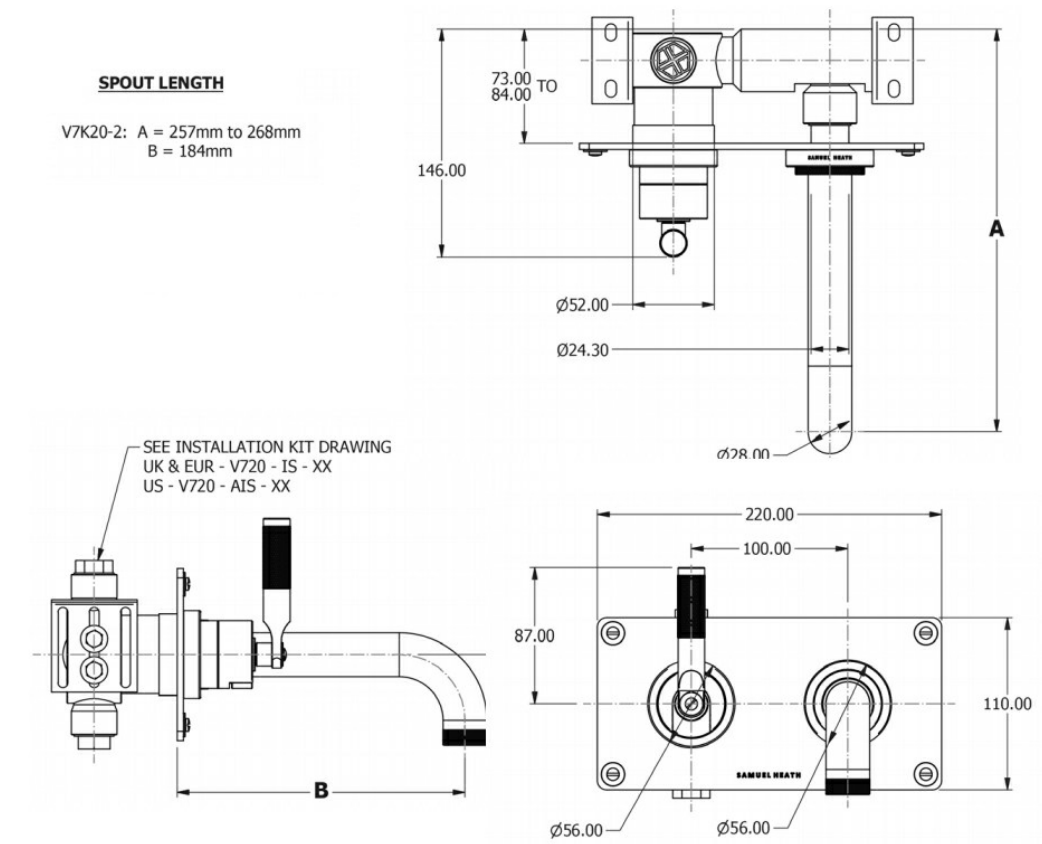











LANDMARK INDUSTRIAL WALL MOUNTED BASIN MIXER LEFT
HANDED - CHROME

SHV7K20-2LK-LH.CP
POA

SAMUEL HEATH
for a life less ordinary



10	Guarantee	10 Year Guarantee
	0 Star WELS rating.	More than 16 litres per minute or failing the performance requirements.
	Mains Pressure	Suitable for Mains Pressure.
	Made in the United Kingdom	Designed & Engineered in the United Kingdom
	Indent Only	Contact us for availability
	BPIR - Importer	Robertson NZ Ltd.
	BPIR - Place of Manufacture	UK
	BPIR - Relevance Documentation	<p>For detailed information on Relevant Building Codes & Statement of Contribution please visit ROBERTSON.CO.NZ/DOWNLOADS and browse the relevant section</p>
	BPIR - Scope of use	Wall mounted basin mixers are installed directly on the wall above the basin, saving countertop space and offering a modern, minimalist look.
	BPIR - B2.3.1 Durability	This product complies with Building Code Regulation B2.3.1 Durability





BPIR - G12.3.2 (A)
G12 Water Supplies

This product complies with Building Code Regulation
G12.3.2 (A) G12 Water Supplies



BPIR - G12.3.7 G12
Water Supplies

This product complies with Building Code Regulation
G12.3.7 G12 Water Supplies