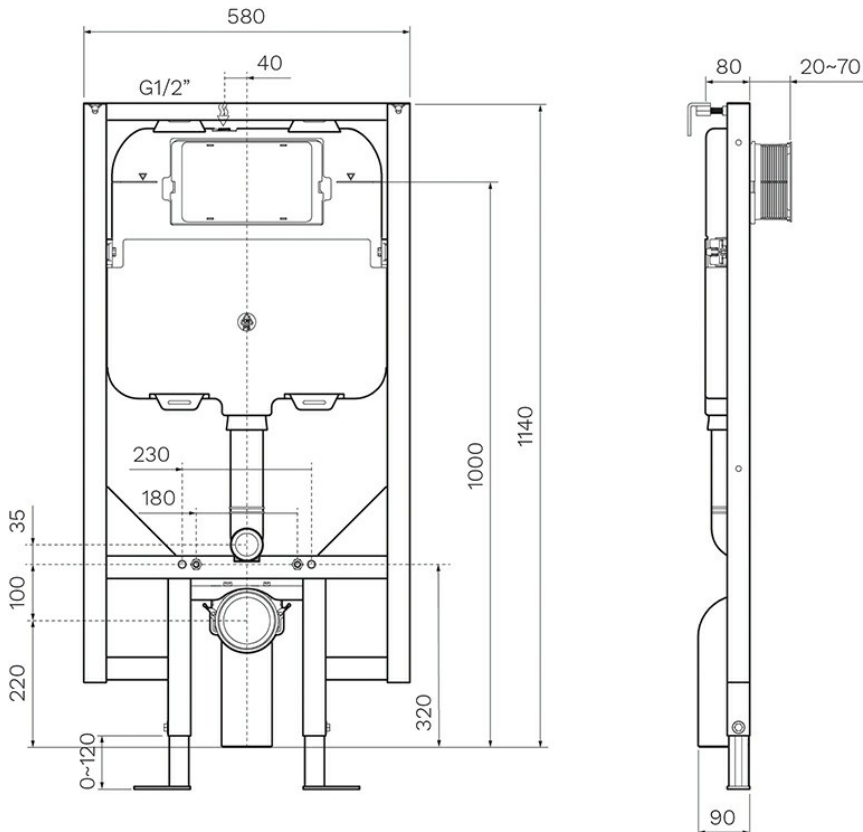


FRONT FLUSH MECHANICAL 90MM INWALL CISTERN WITH METAL FRAME

PA120
\$745

PARISI



Residential/Light Commercial Use

Suitable for Residential/Light Commercial Use (Kitchens, Bathrooms and Laundries in Hotels, Motels and Retirement Villages).



Guarantee

15 Year Guarantee



4 Star WELS rating (Toilets)

Allows for a 4.5 litre large flush and a 3 litre half flush



Weight Tested

Weight Tested to 400kg



BPIR - NZS 4121:2001 Toilets

This product complies with Building Code Regulation NZS 4121:2001 Access & Mobility - Toilets



BPIR - B2.3.1 Durability

This product complies with Building Code Regulation B2.3.1 Durability



BPIR - G1.2.2 Flushing Systems

This product complies with Building Code Regulation Personal Hygiene - Flushing Systems



Additional Information






The bracket should be mounted flush with the timber framing so the Villa board will be hard against the bracket. NB failure to do this may cause the wall to move and tiles to crack.



Additional Information

If necessary strengthen the wall using additional horizontal or vertical nogs and also additional fixings at floor and ceiling.



	Additional Information	Once the Bracket has been installed, the wall framing should be tested for any deflection. There should not be any deflection.
	Additional Information	The Wall Studs should be nogged in a minimum of three places spaced equally between floor and ceiling.
	Additional Information	The minimum size of Timber framing and Grade is 100mm x 50mm Radiata MSG8, K/D, H1.2, M/g
	Additional Information	The Top and Bottom Timber Framing Plates must be well secured with no movement.
	Additional Information	If using a wall hung pan the wall lining must be a material such as Villa board with a minimum thickness of 9mm.

The Inwall Concealed Cistern with Metal Frame PA120 is suitable for use with any PARISI wall hung pan.