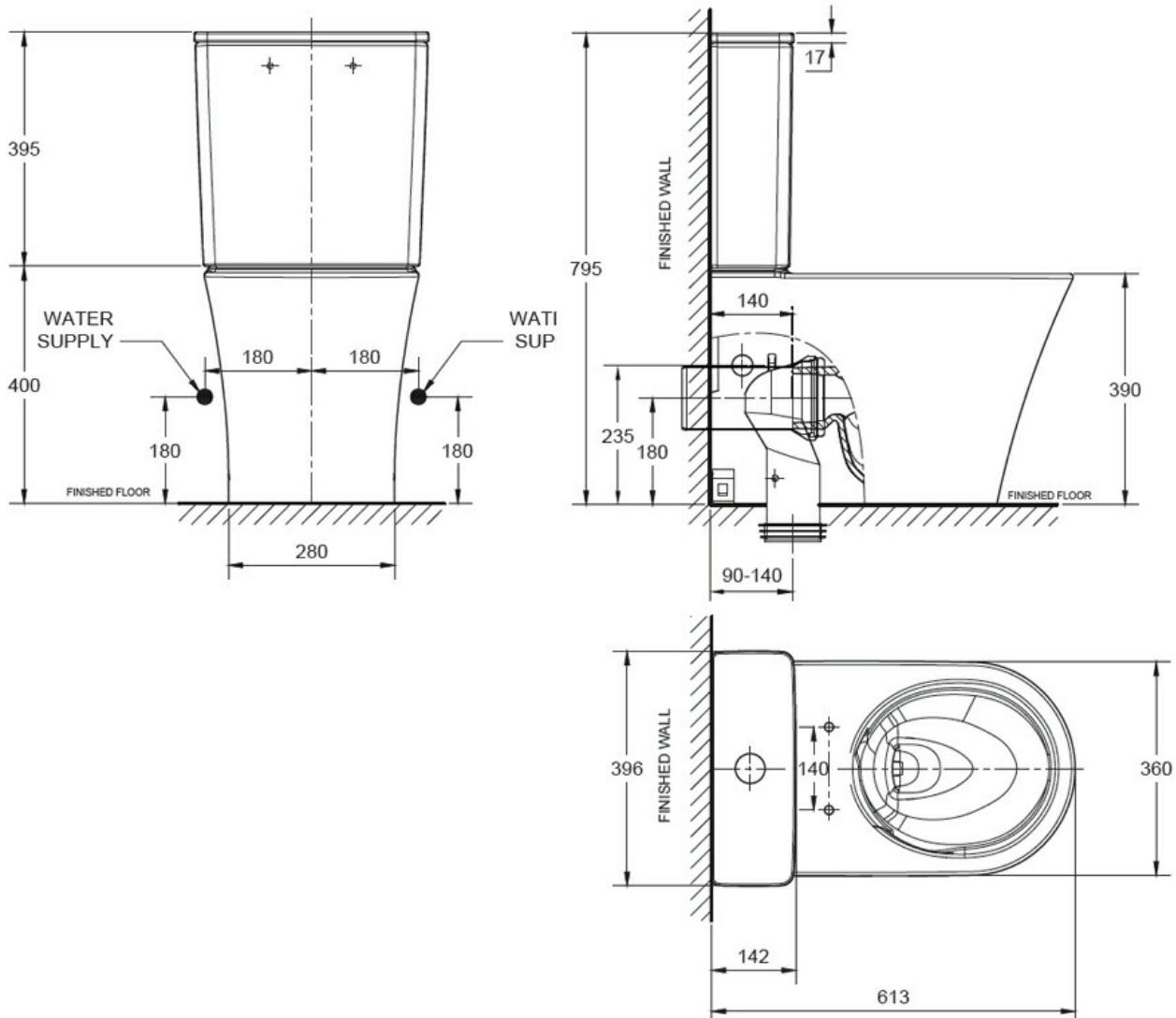


## HERON HYGIENE CC BTW SUITE BOTTOM INLET SOFT CLOSE

12710.10  
\$1015

*American Standard*



Residential/Light Commercial Use

Suitable for Residential/Light Commercial Use (Kitchens, Bathrooms and Laundries in Hotels, Motels and Retirement Villages).



Commercial Use

Suitable for commercial use.



Guarantee

1 Year Guarantee on toilet seat and cistern parts



Guarantee

10 Year Guarantee



4 Star WELS rating (Toilets)

Allows for a 4.5 litre large flush and a 3 litre half flush



Skirted Design

Premium design allows for quick and easy exterior cleaning.





**Comfort Curve Seat**

An ergonomic fit that comfortably contours to the body.



**Rimless Clean**

Hygienic and easy to clean



**Double Vortex Flushing System**

Maximum flushing performance, with minimum water usage. The design of the bowl propels the water forward and creates a strong flushing momentum.



**Hand Finished**

Hand Finished Vitreous China.



**VC Allowance**

Please give an allowance of 10mm (-/+ ) for all Vitreous China toilet dimensions.



**Quick Release**

Seat can easily be removed and just as easily reattached in an instant.



**Soft Close Seat**

The Soft Close automatic closure system finally puts an end to noisy closing WC seats. Just a fingertip touch and the lid closes all by itself, gently and silently.



**BTW CC Toilet Suite**

The back to wall (BTW) close coupled (CC) toilet suite adds a streamlined, modern look to any bathroom. Positioned flush with the wall, there is no gap behind and all waste and inlet pipes are concealed, with the cistern then positioned above the bowl.



**Dual Flush**

A Dual flush toilet provides the user with two flushing options (Full flush & half flush). Both practical and water efficient.

The Heron toilet suite now comes with an updated design that features a new low profile cistern lid that compliments a thinner soft close quick release seat for a more modern and sophisticated look and feel.

The new "Hygiene Rim" also features a rimless bowl for ease of cleaning, while being powered by Double Vortex flushing technology for maximum flushing performance.