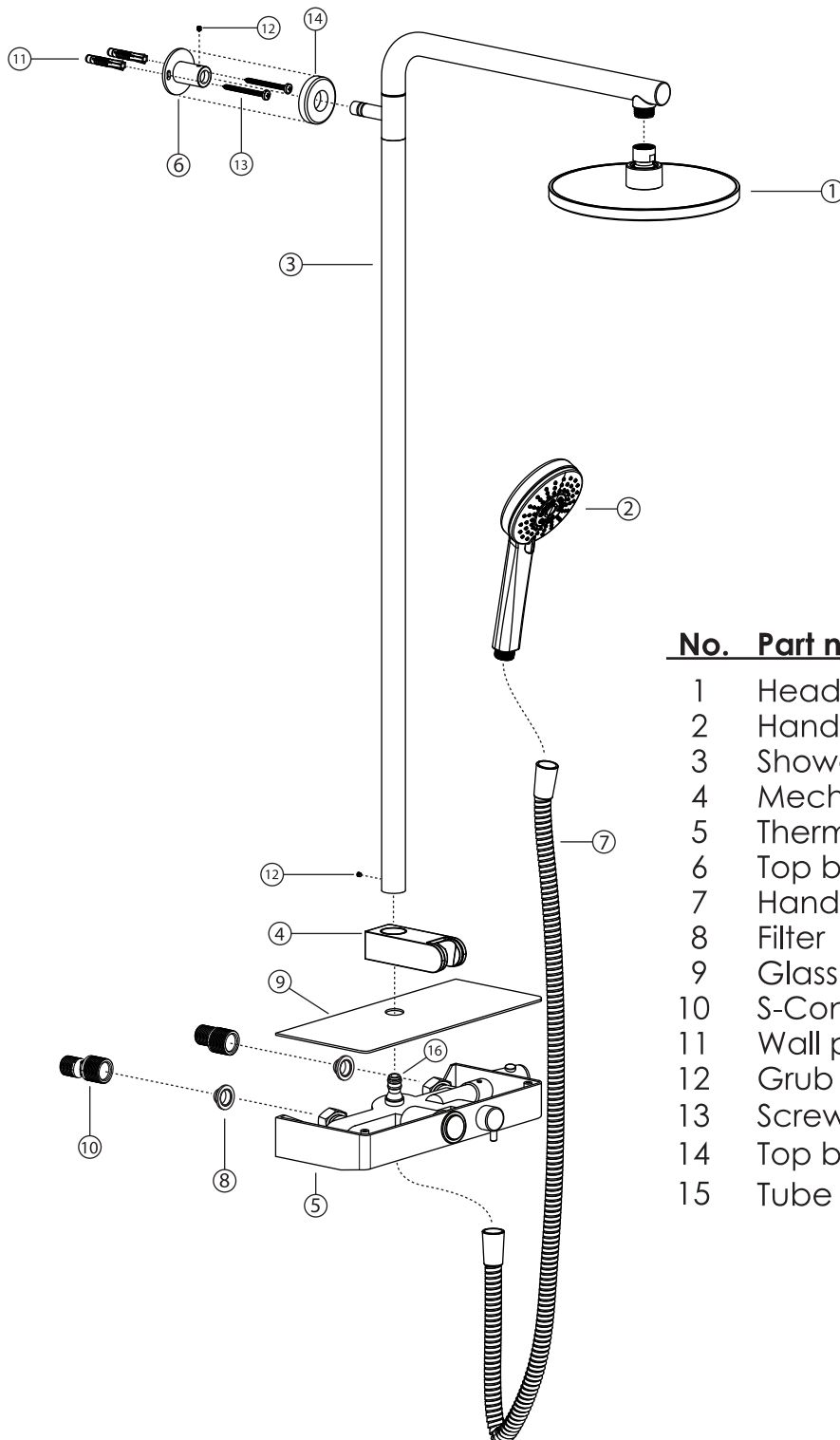


INSTRUCTION GUIDE

SHELF THERMOSTAT FAUCET WITH FIXED ROTATION SHOWER UNIT

IMPORTANT : FLUSH THROUGH ALL SUPPLY PIPEWORK BEFORE CONNECTING THE FAUCET TO THE WALL AS THIS COULD DAMAGE OR BLOCK THE CARTRIDGE / DIVERTOR MECHANISMS.

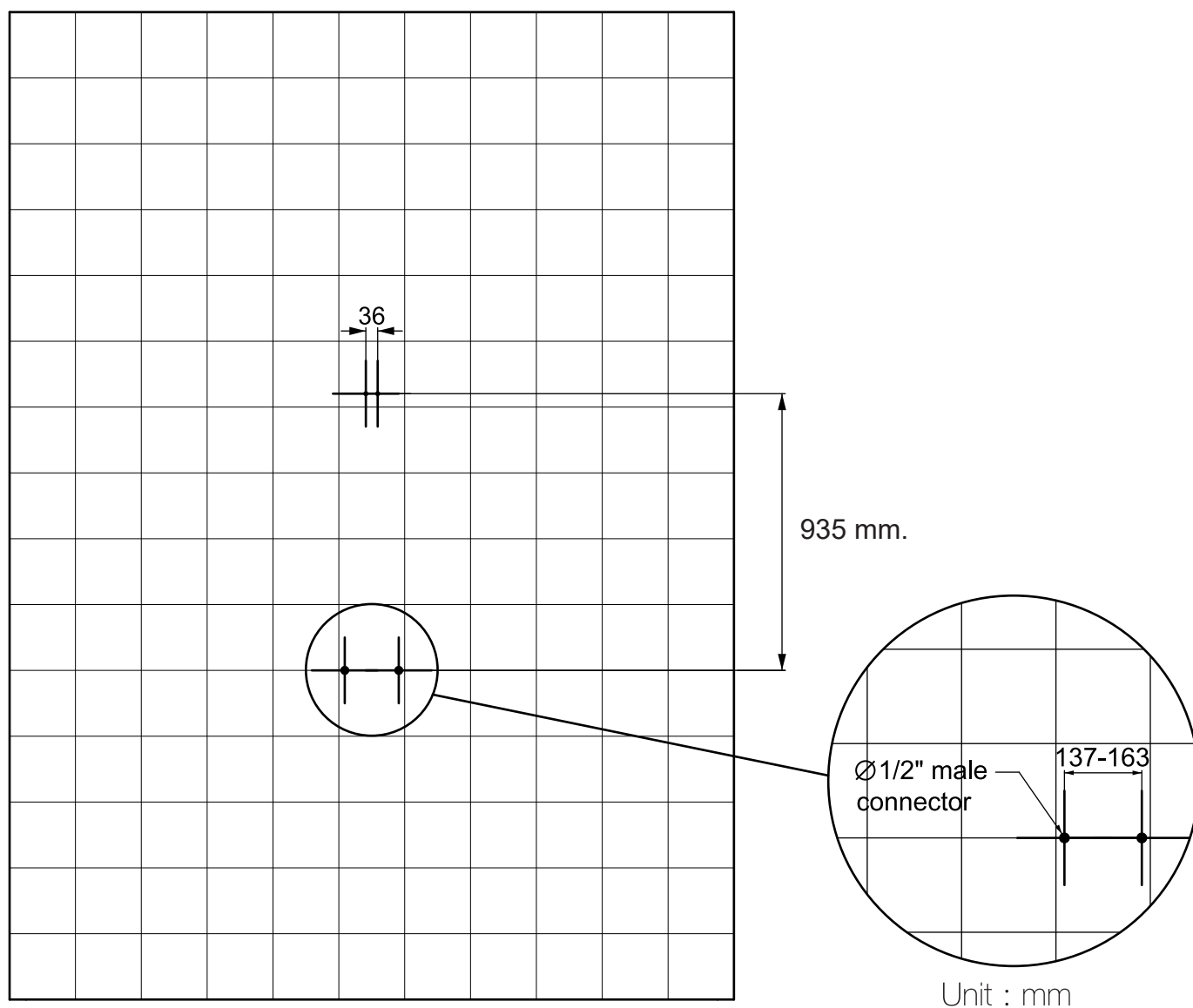


No.	Part name	Q.ty
1	Head shower	1
2	Hand shower	1
3	Shower system tube	1
4	Mechanism slider	1
5	Thermostatic Shelf	1
6	Top bracket	1
7	Hand shower hose	1
8	Filter	2
9	Glass shelf	1
10	S-Connector	2
11	Wall plugs	2
12	Grub screw	2
13	Screws	2
14	Top bracket escutcheon	1
15	Tube connector	1

INSTRUCTION GUIDE

SHELF THERMOSTAT FAUCET WITH FIXED ROTATION SHOWER UNIT

RECOMMENDED INSTALLATION POSITION

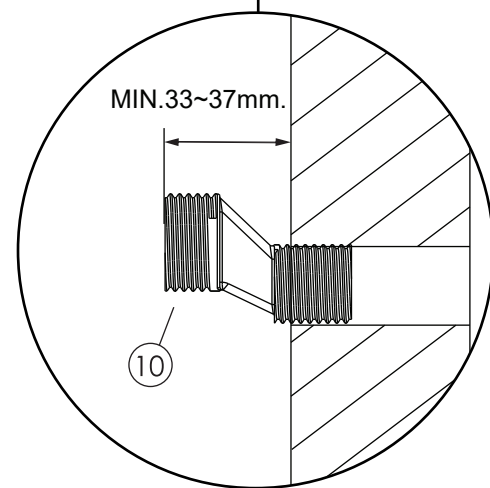
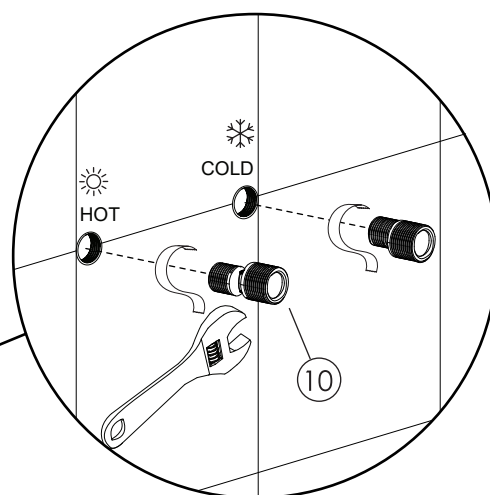
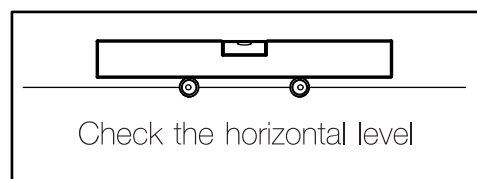
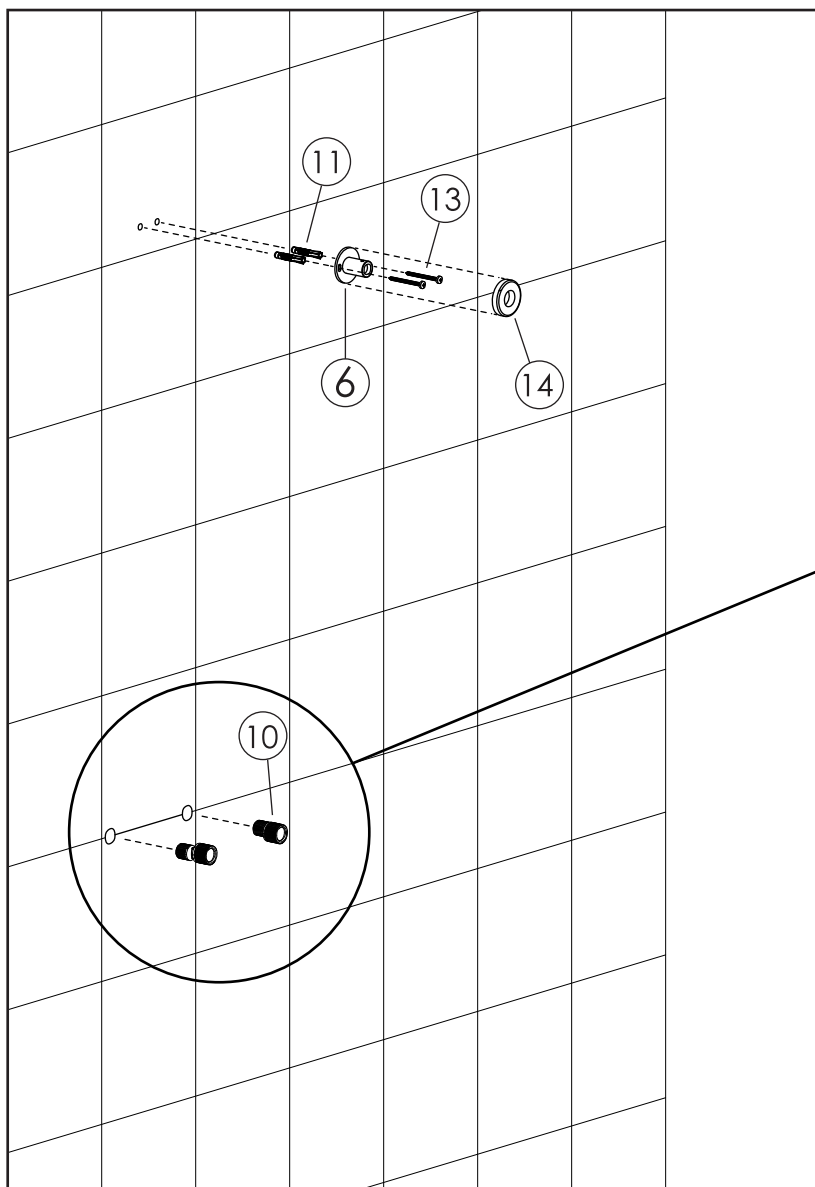


INSTRUCTION GUIDE

SHELF THERMOSTAT FAUCET WITH FIXED ROTATION SHOWER UNIT

STEP 1

Install S-Connectors(10) and Wall escutcheons(9) and Top Bracket(6) to Wall.



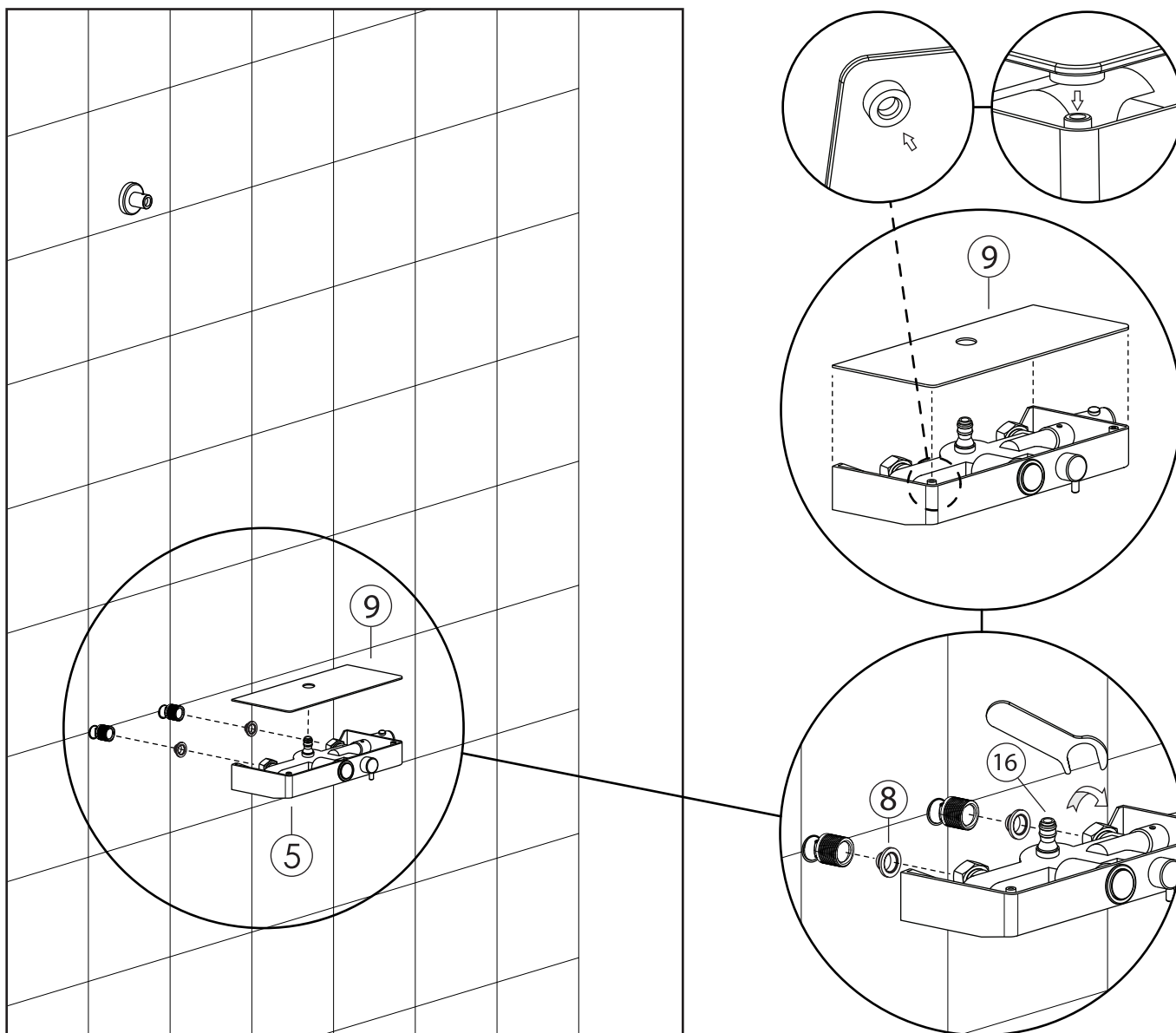
Adjust the distance of the S-connectors to 33-37mm.

INSTRUCTION GUIDE

SHELF THERMOSTAT FAUCET WITH FIXED ROTATION SHOWER UNIT

STEP 2

Assemble Tube connector(16) and Filters(8) to the Inlets. Connect Faucet to the Wall.
Lower Glass shelf(9) on to the top of the Faucet.

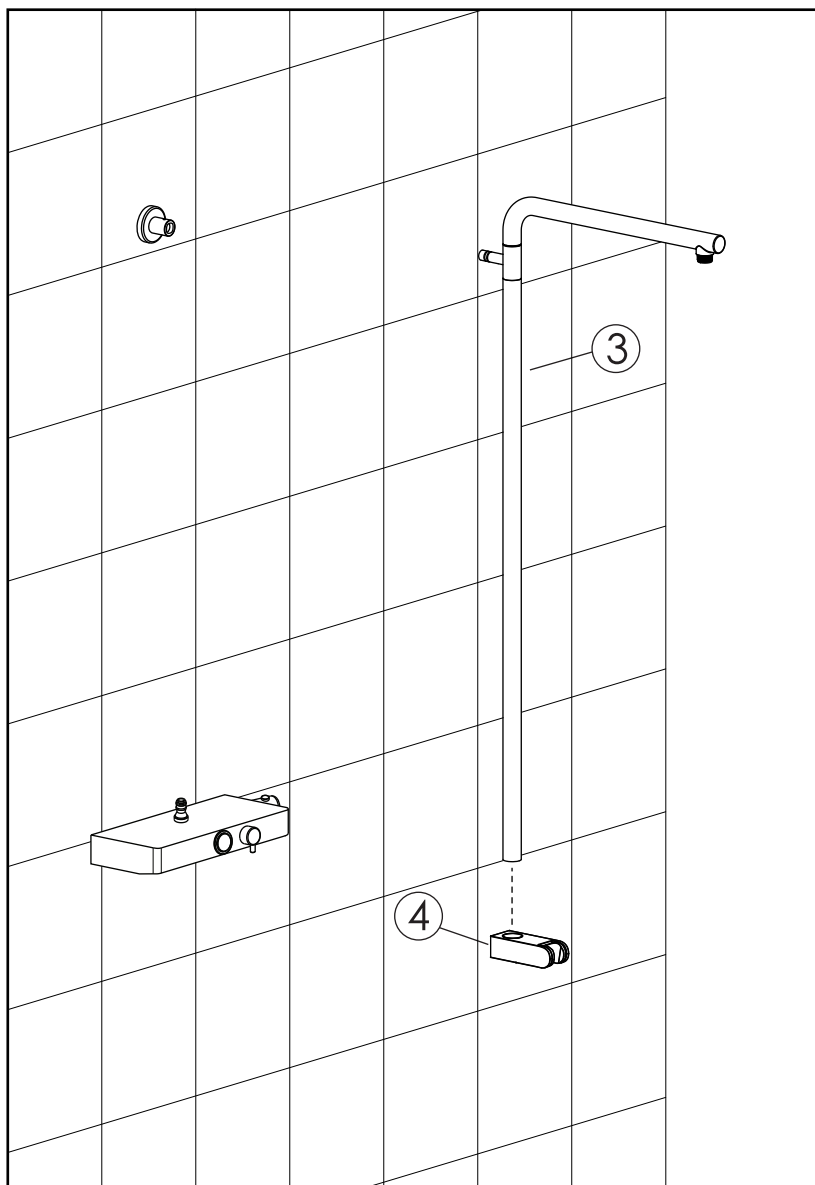


INSTRUCTION GUIDE

SHELF THERMOSTAT FAUCET WITH FIXED ROTATION SHOWER UNIT

STEP 3

Assemble Mechanism slider(4) to Shower tube(3)

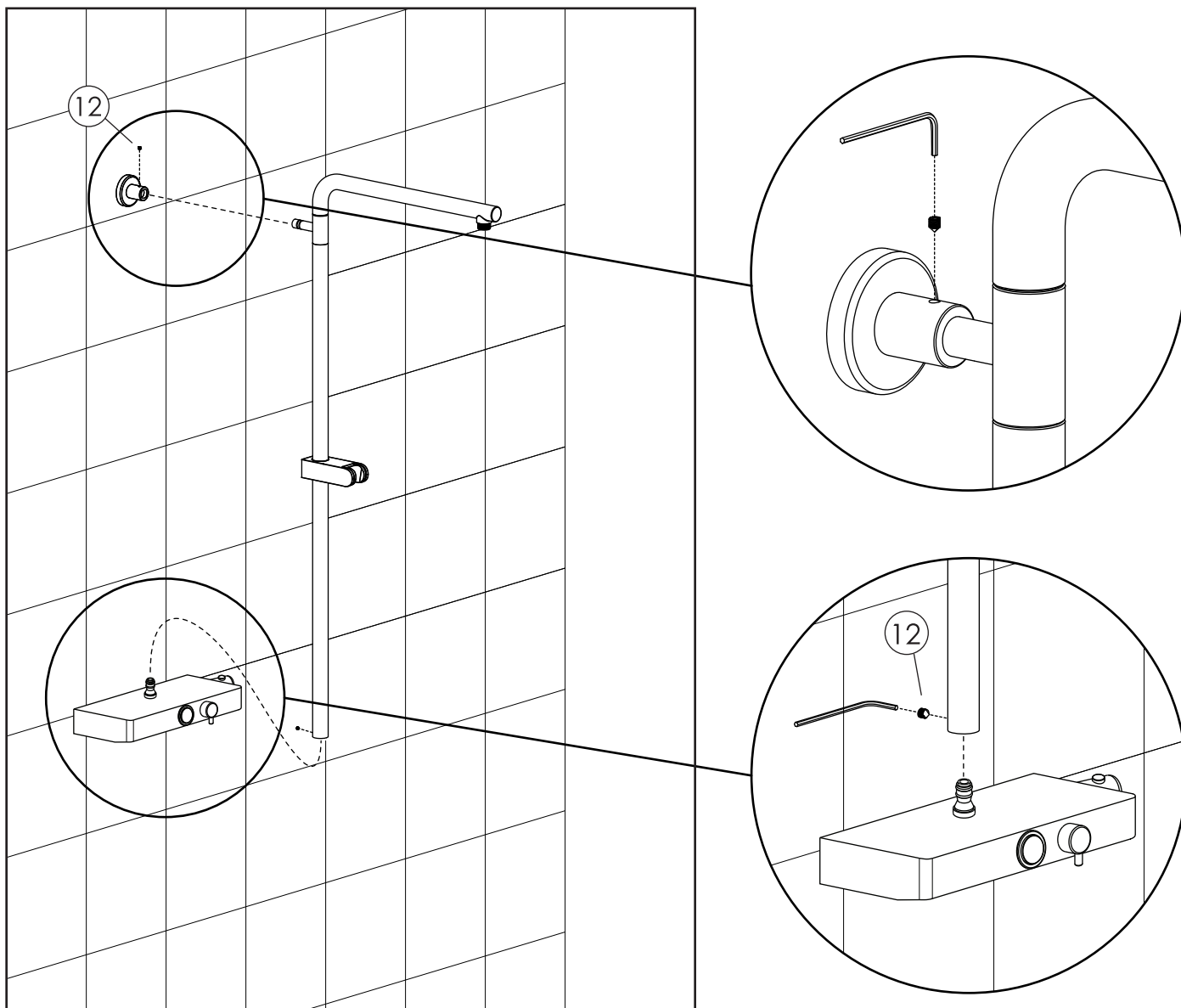


INSTRUCTION GUIDE

SHELF THERMOSTAT FAUCET WITH FIXED ROTATION SHOWER UNIT

STEP 4

Install Shower system tube to Faucet and Top Bracket. Tighten Grub screws(12).

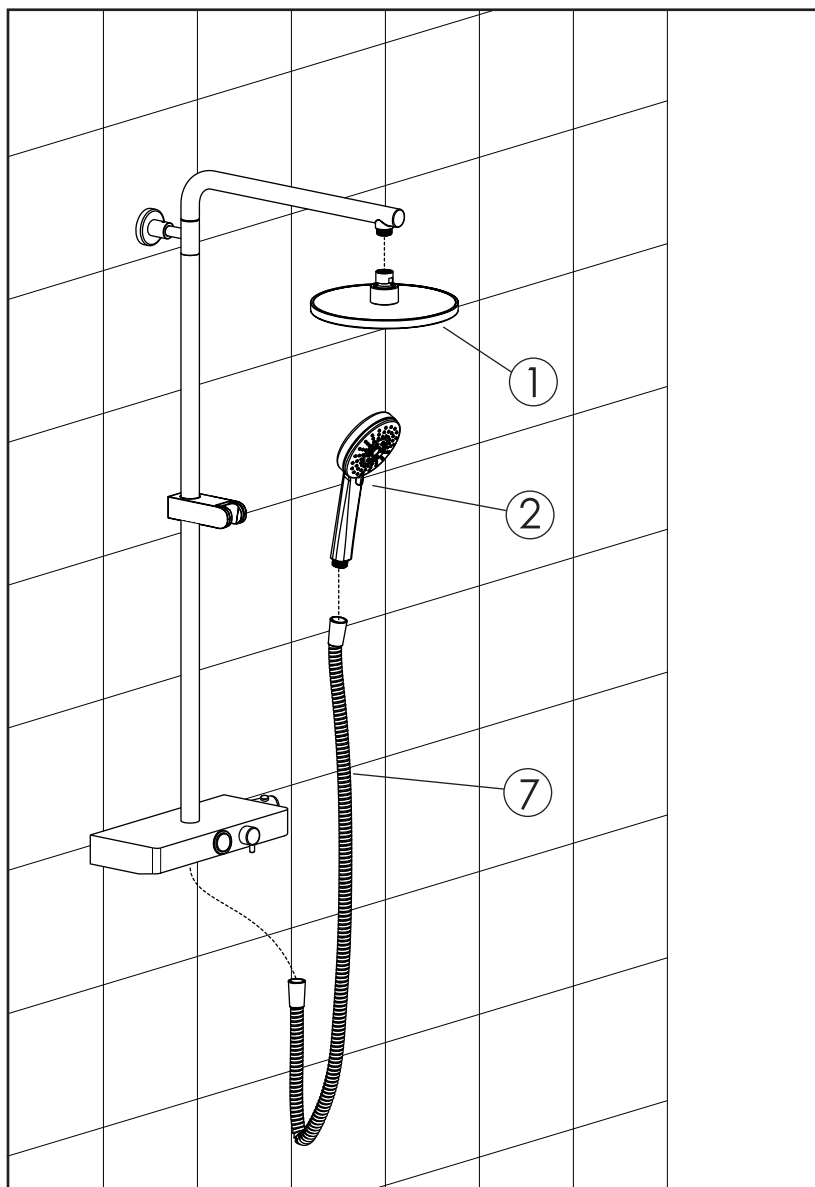


INSTRUCTION GUIDE

SHELF THERMOSTAT FAUCET WITH FIXED ROTATION SHOWER UNIT

STEP 5

Assemble Hose(7), Hand shower(2) and Head shower(1)



INSTRUCTION GUIDE

SHELF THERMOSTAT FAUCET WITH FIXED ROTATION SHOWER UNIT

STEP 6

Usability testing

