

Page 4 of 4

# ELEMENTi

## Savon Mains Pressure Shower Mixer

### GUARANTEES

All Guarantees are subject to terms and conditions and available on request or can be viewed at <https://www.robertson.co.nz/downloads>

WITHOUT EXCEPTION ROBERTSON PRODUCTS ARE GUARANTEED TO MEET OR EXCEED THE STANDARD REQUIREMENTS FOR THE NEW ZEALAND BUILDING CODE.

\*This excludes commercial installations unless stated.

In addition to specific guarantees provided, all products imported and or sold by Robertson are, to the extent applicable, guaranteed in accordance with the Durability Clauses of the New Zealand Building regulations and Consumer Guarantees Act.

Our guarantees apply only to products imported and sold by Robertson. These guarantees do not cover products sold by Robertson under any other agency, company or brand name.

As part of our ongoing commitment to continuous improvement, Robertson NZ Ltd reserves the right to make changes to its products at any time.

As this guarantee may not cover the cost of removal or installation, all products must be checked to see they are in good order and condition and fit for the intended purpose prior to installation.

Robertson reserves the right to determine any issue or uncertainty in connection with the warranty.

Robertson reserves the right to repair and or replace the defective product and or component at its discretion or nearest equivalent if a product needs to be replaced.

All Warranty covered repair work is to be performed by a Robertson representative and or authorised service agent or plumber who has received an authorisation number to attend the job.

Proof of purchase must be provided for all warranty claims.

This warranty is personal to the first end user and is not transferable unless stated.

### Warranty Conditions

- This warranty will apply only under all of the following conditions:
- The item has been installed by a licensed plumber
  - The item has been installed as per the conditions of the recommend use
  - Failure is due to a fault in the manufacture of the product
  - Proof of purchase (including the date of purchase) is provided
  - The installation of the product is in accordance with the instructions provided

This warranty does not cover products purchased as an ex-display.

- This warranty does not include faults caused by:
- Unsuitable or improper use.
  - Incorrect installation or installation not in accordance with the instructions provided.
  - Installation or part installation by the purchaser or any person other than a LICENSED PLUMBER.
  - Normal wear and tear.
  - Inadequate or complete lack of maintenance.
  - Chemical, electrochemical or electrical influences.
  - Harsh detergents or abrasive cleaners used on product finishes.

### CARE AND MAINTAINANCE

Where your tapware remains dry in use, a soft cloth should be used to remove surface dust. Alternatively, a wipe over with warm soapy water is all that is required to maintain the finish in perfect condition for a lifetime of use, the surface duration depends on the attention and care by which they are handled by users. Deterioration of surface finishes due to use of cleaning agents containing acids or abrasive substances will not be covered under warranty.

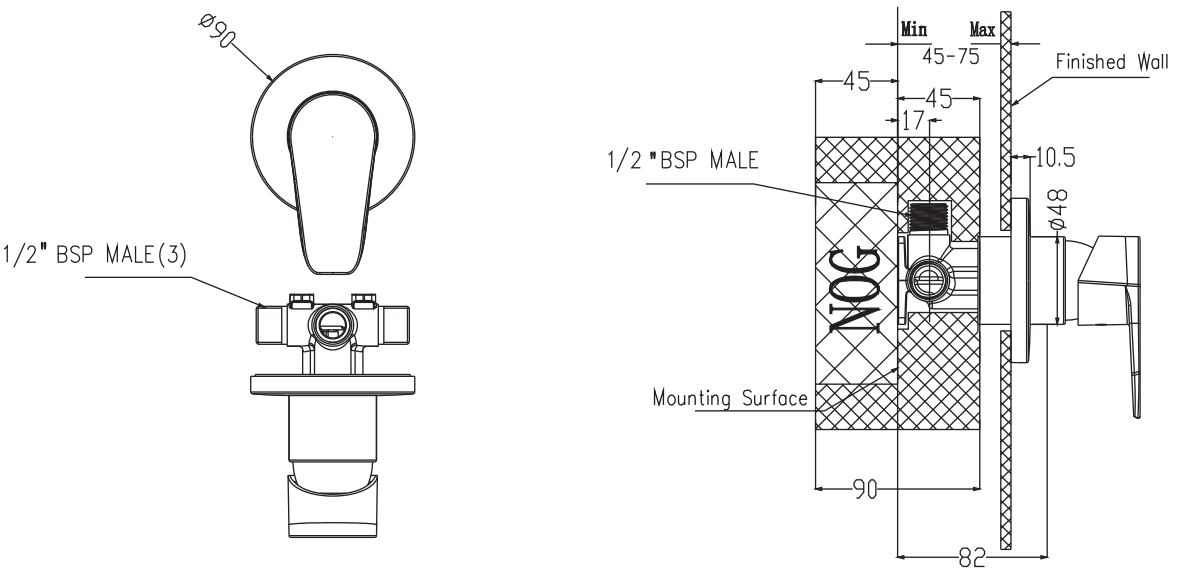
### CLAIM PROCEDURE

For all warranty queries customers are to contact the store where the product was purchased. These details can be found on your purchase invoice.

Page 1 of 4

# ELEMENTi

## Savon Mains Pressure Shower Mixer



■ For Reference only (unit = mm)

SPECIFICATIONS		
Recommended use	Residential, Hotels, Motels, Retirement Villages	
Colour availability	Chrome	
Pressure rating	<b>Mains Pressure-Equal</b> Maximum operating pressure 500 KPa. Minimum operating pressure 150 Kpa.	
Temperature rating	Maximum continuous working temperature 70°	
Flow Rates	<b>Mains Pressure</b>	Matched with a WELS 3 Star shower
	Shower	8.5 L/m
Suitable Hot Water Units	Storage Tank: Yes Continuous Flow: Yes* (* Balanced Hot & Cold Supply To The Mixer Is Required Gravity Feed: Not Recommended	
Installation options	Shower or bath	



### CLEANING RECOMMENDATIONS

This product should not be cleaned with abrasive materials damage caused by any improper treatment is not covered by the product warranty – refer to Warranty Conditions on the last page.

# ELEMENTi

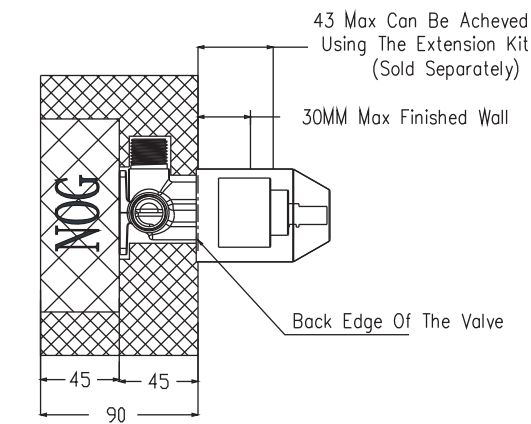
## Savon Mains Pressure Shower Mixer

### INSTALLATION

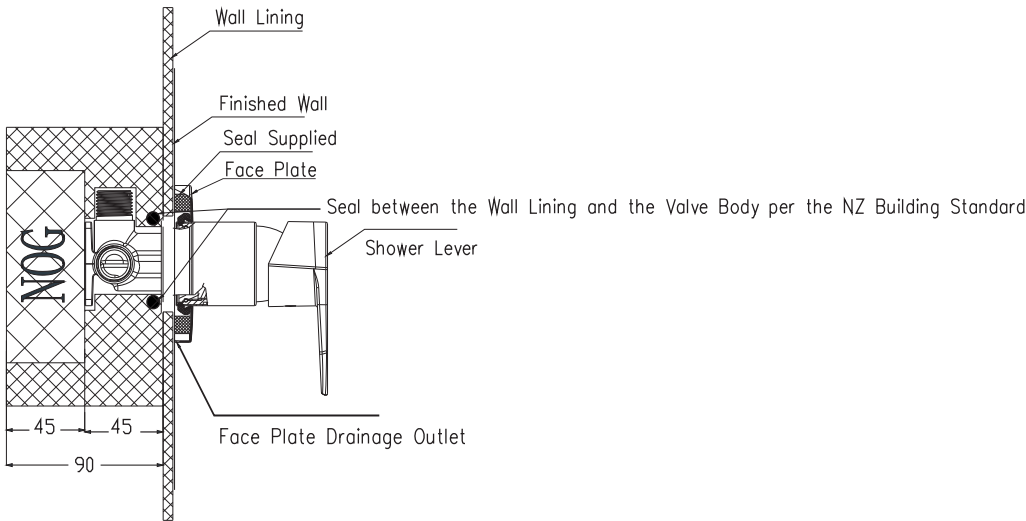
#### Installation Procedure

Mixer must be installed to the requirements of AS/NZS 3500 by a licenced plumber. Your mixer comes to you already factory assembled, tested and sealed to give the best performance. We do not recommend the dismantling of any internal part of the mixer.

- 1. Flush out new pipework prior to connecting the new mixer
- 2. During installation protect the exposed finish surface by keeping the plaster guard provided on the mixing valve. Please pay attention to installation depths 45 minimum - 75 mm Maximum (Note: an additional 13mm can be achieved using the mains pressure shower mixer extension kit, sold separately)



- 3. In a typical installation the mixer is mounted on a timber nog and secured through the fixing points
- 4. The mixer must be installed in the correct position( i.e shower up )
- 5. Connect the mixer to the hot and cold water supplies
- 6. Check the connections
- 7. Should a hydrostatic test be required a maximum pressure of 1000 kPa,with the valve in closed position,otherwise, the mixer must be isolated. Failure to do this can damage the ceramic disc and void the warranty
- 8. It is the installers responsibility to ensure that the hole around the valve body is sealed to the finished wall



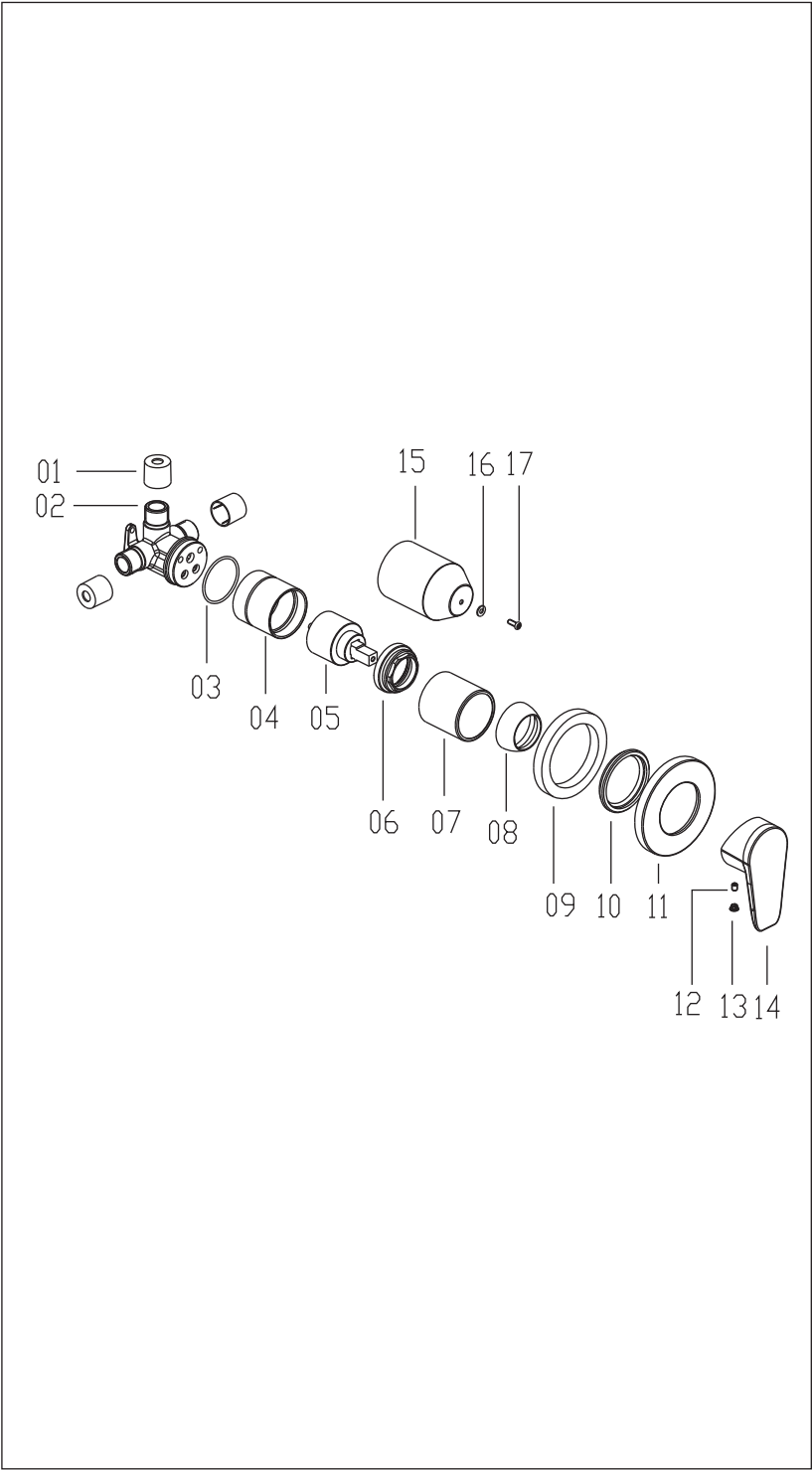
- 9. When ready for finishing, remove the plaster guard and assemble the faceplate and handle

# ELEMENTi

## Savon Mains Pressure Shower Mixer

### SERVICING - CARTRIDGE REPLACEMENT

- 1. Remove handle using hex key
- 2. Remove faceplate ,dome cap,o- ring and trim sleeve
- 3. Isolate mixer
- 4. Remove the cartridge Fixation Nut and Cartridge Housing
- 5. Replace the cartridge. Repeat process in reverse:  
Do Not over tighten the lock nut, cartridge should be watertight but not overtight(12NM)



### EXPLODED VIEW

Item	Description	P/N
1	Thread cap	CTCP0362
2	Valve Body	CTYK0029
3	O-ring	CTRR0147
4	Cartridge Housing	CTCB1054
5	Cartridge	ATBA0393
6	Fixation Nut	CTKB0151
7	Trim Sleeve	CTCB1055-P1
8	Dome Cap	CTCP0186-P1
9	Face plate Seal	CTWP0331
10	Trim Sleeve Seal	CTWR0356
11	Round Face Plate	CTCT0151- P1
12	Handle Screw	CTST0117
13	Cap	CTCP0072-P1
14	Lever Handle	CTHZ0742-P1
15	Plaster Guard	CTCP0657
16	Washer	CTWT0013
17	Screw	CPST0013

Please ensure a copy of the installation instructions are left with the end user for future reference