

ELEMENTi

ION MULTI PRESSURE SHOWER MIXER

GUARANTEES

Robertson offers 5 years guarantee on ceramic cartridges and other material excluding washers, o-rings and other perishable components.

Where the product fails within the warranty period we offer a free replacement or replacement part (or nearest equivalent) or to repair the failed product.

This guarantee is transferable – it applies to the product not the purchaser provided proof or purchase details are passed on to the new owner. This guarantee does not affect your statutory rights.

Products must be installed, used and cared for in line with product guidelines, our fixing instructions and building regulations.

In addition to specific guarantees provided, all products imported and sold by Robertson are, to the extent applicable and guaranteed in accordance with the durability clauses of the New Zealand Building regulations and the Consumer Guarantees Act. Some product warranties may be effected by misuse or local conditions eg. Adverse cleaning products. The warranty and guarantees given by Robertson may be void where repair work is carried out by persons not specifically authorised to carry out such work by Robertson.

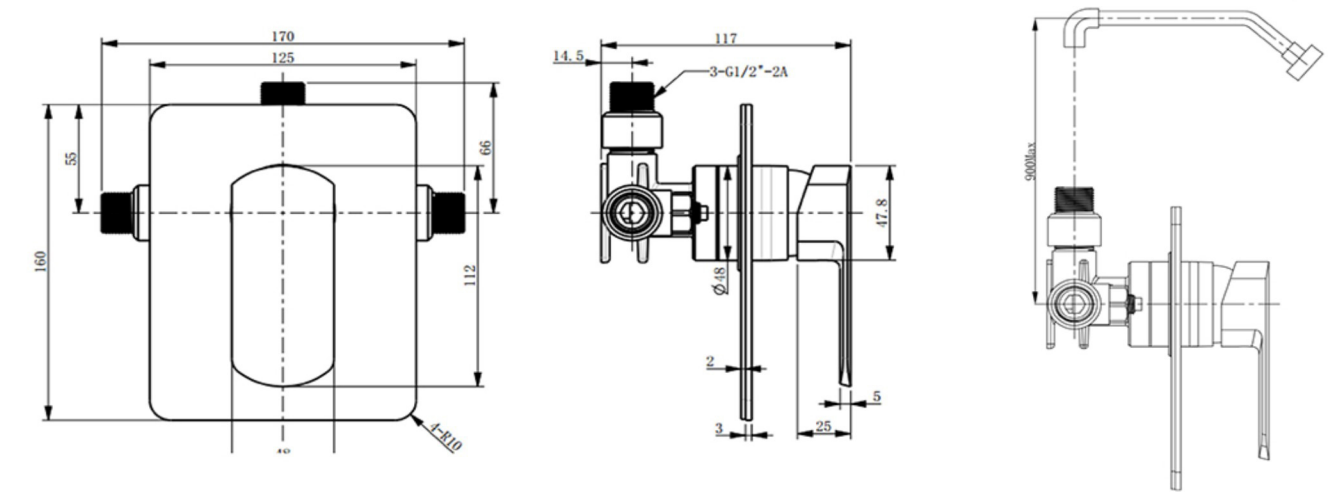
The above guarantees apply only to products imported and sold by Robertson. These guarantees do not cover products sold by Robertson under any other agency company or brand name.

IMPORTANT:

Products must be inspected prior to installation. Please ensure that all products purchased from Robertson are inspected prior to installation. Any suspected defect in a product must be notified to Robertson as soon as possible after discovery. Should any defects be found do not install. Return the product to the point of purchase for a replacement. If a product is installed despite a fault having been identified prior to installation, Robertson will not accept any liability for the cost of the labour to remove and install any replacement product.

ELEMENTi

ION MULTI PRESSURE SHOWER MIXER



■ For Reference only (unit = mm) ■ Low/Unequal Pressure set up

| SPECIFICATIONS | | |
|--------------------------|--|--|
| Recommended use | Domestic and Hotel | |
| Colour availability | Chrome, Brushed Nickel, Gun Metal, Black, Brushed brass | |
| Pressure rating | Mains Pressure-Equal Maximum operating pressure 500 KPa. Minimum operating pressure 150 KPa. Low/Unequal Pressure Maximum operating pressure Cold 500 KPa. Minimum operating pressure Hot 35 KPa. | |
| Features | Mains & low/unequal pressure Full control adjustment behind faceplate | |
| Temperature rating | Maximum continuous working temperature 70° | |
| Flow Rates | Mains Pressure Shower 8.5 L/m Matched with a WELS 3 Star shower | |
| | Low/Unequal Pressure Shower 7 L/m Matched with an approved low/unequal WELS 3 Star shower Refer to figure 1 for installations requirement | |
| Suitable Hot Water Units | Storage tank: Yes Continuous Flow: Yes Gravity Feed: Not recommended | |
| Installation options | Shower or bath | |



Figure 1
Low/Unequal Pressure set up

CLEANING RECOMMENDATIONS

This product should not be cleaned with abrasive materials damage caused by any improper treatment is not covered by the product warranty – refer to Warranty Conditions on the last page.

ELEMENTi

ION MULTI PRESSURE SHOWER MIXER

INSTALLATION

Installation Procedure

Mixer must be installed to the requirements of AZ/NZS 3500. Your mixer comes to you already factory assembled and tested. We do not recommend the dismantling of any internal part of the mixer. The mixers are factory tested and sealed so as to give the best performance.

- Flush out new pipe work prior to connecting the new mixer.
- Mixers are recommended for use on mains pressure, instantaneous systems and low/unequal pressure.
- During installation protect the exposed finish surface by using the cover provided.
 - Please pay attention to installation minimum (58mm)/maximum (75mm) depth. Cut access hole as per tile guard dimension
- In a typical installation, the mixer is mounted on a timber/metal noggin and secured through the fixing points.
 - For low/unequal pressure it is important the vertical rise between shower mixer and the shower must not exceed 900mm (refer to figure 1).
- In-wall mixer must always be installed in correct position ie shower up .
- Connect mixer to hot and cold water supply.
- Check connections (in-line check valves come factory set fully open).
- Should a hydrostatic test be required isolate the mixer using the hot and cold in-line check valves.
 - Leaking joints are not covered by the warranty.
- When ready for finishing, remove the plaster guard and assemble the face plate and handle.
- As shower walls are finished in many different ways it is the responsibility of the installer to ensure the escutcheon is water tight against the wall

Low/Unequal Pressure Adjustment

- Remove handle using allen key.
- Remove face plate.
- Ensure hot is open to 100% and cold is closed to 100%.
- Set mixer handle to fully on in center position.
- Adjust cold in-line service stop valve to desired temperature using small flat screw driver.
- Replace face plate and handle.

SERVICING-CARTRIDGE REPLACEMENT

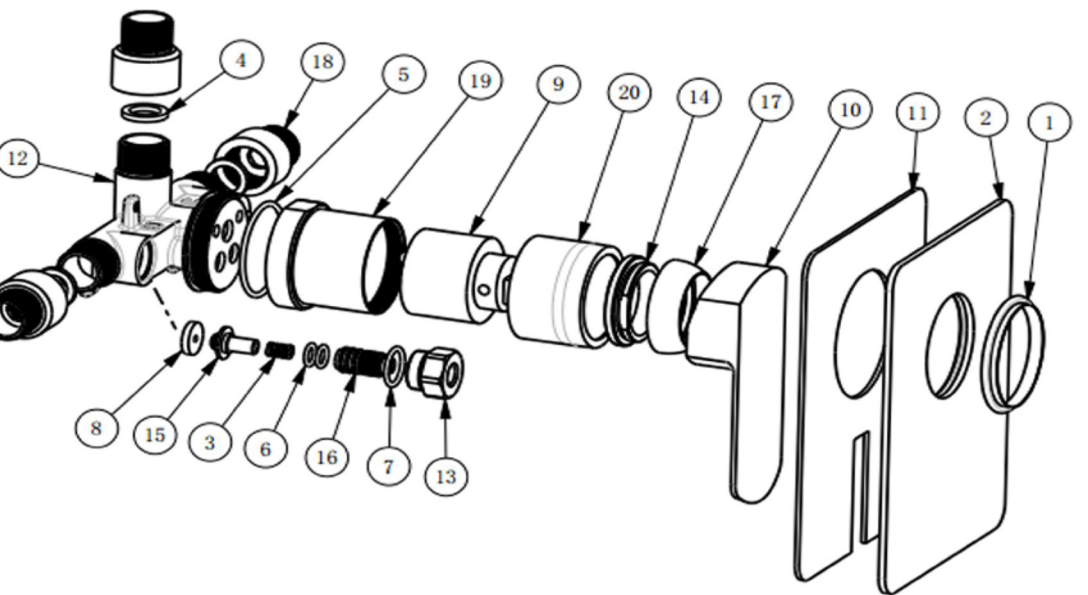
- Remove handle using allen key.
- Remove face plate.
- Isolate mixer using the in-line check/service stop valves.
- Remove the cartridge cover and remove cartridge lock nut (14) .
- Replace the cartridge(9) , repeat process in reverse.
 - Do not over tighten cartridge
 - Cartridge needs to be watertight but not over tight.

Plumbers, please ensure a copy of the installation instructions is left with the end user for future reference

ELEMENTi

ION MULTI PRESSURE SHOWER MIXER

EXPLODED VIEW



| Item Number | P/N | Description | QTY |
|-------------|---|---|-----|
| 1 | 1H0283EWNT | O-Ring | 1 |
| 2 | 1D0190AWCP/1D0190AWBN/1D0190AWGMS/1D0190AWSH/1D0190AWZGPVDN | Face Plate (Chrome/Brushed Nickel/Gun Metal/Black/Brushed Brass) | 1 |
| 3 | 1J0031CWNT | Spring | 2 |
| 4 | 1R0011NT | Washer | 1 |
| 5 | 1H0311EWNT | Rubber ring | 1 |
| 6 | 1H030NT | O-Ring | 4 |
| 7 | 1H0067NT | O-Ring | 2 |
| 8 | 1R0060EWNT | Flat Washer | 2 |
| 9 | 1B0016EWNT | Cartridge | 1 |
| 10 | 1E0228AWCP/1E0228AWBN/1E0228AWGMS/1E0228AWSH/1E0228AWZGPVDN | Handle (Chrome/Brushed Nickel/Gun Metal/Black/Brushed Brass) | 1 |
| 11 | 1R0072EWNT | Face Plate Gasket (FIXED TP ITEM 2) | 1 |
| 12 | 1A011 5AZNT | Body | 1 |
| 13 | 1G0324AZNT | Connector | 2 |
| 14 | 1C0112AZNT | Nut | 1 |
| 15 | 1 G0322AZNT | Connector | 2 |
| 16 | 1G0323AZNT | Connector | 2 |
| 17 | 1D0110AZCP/1D0110AZBN/1D0110AZGMS/1D0110AZSH/1D0110AZZGPVDN | Cartridge Cover (Chrome/Brushed Nickel/Gun Metal/Black/Brushed Brass) | 1 |
| 18 | 1 G0440AZNT | Adapter | 3 |
| 19 | 1O0151AZNT | Inner cover sleeve | 1 |
| 20 | 1O0087AZNT | Outer cover sleeve | 1 |