



## Important Safeguards

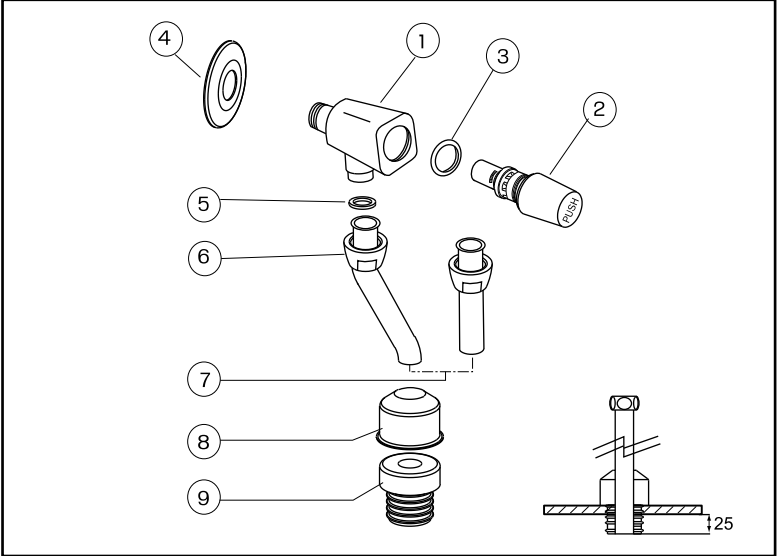
(For your safety, please follow the instructions below.)

Read these Important Safeguards instruction thoroughly before using your product and follow the precaution instructions carefully.

In this Instruction manual, the following symbols are shown for safe and proper use of your product and in order to alert you to the possibility of personal injury and damage to your property. The symbols and their meanings are as follows.

 <b>Do not</b>	Do not strike or kick to the flush valve. This may cause product is damage or water leakage.
	Do not remove piston's strainer, because orifice will clog and water flow all time.
	Do not use liquid cleaners with acid, base content, polishing powder or steel wool for cleaning.
 <b>Mandatory</b>	Before installation, clean out dirt or other impurites which may have collected in water pipes by allowing water to flow freely for a moment.
	Flush valve must be 90° with floor, If it lopsided because of water leak during flushing.
	Use for tap water only.

## INSTALLATION MANUAL : URINAL FLUSH VALVE : CT475SS, CT475SL



- |                  |                      |
|------------------|----------------------|
| 1. Body          | 7. Water outlet pipe |
| 2. Spindle set   | 8. Rubber spud cover |
| 3. Rubber        | 9. Rubber spud       |
| 4. Cover         |                      |
| 5. Rubber gasket |                      |
| 6. Lock nut      |                      |

### Pre-installation check

1. Make sure that equipment and tools are proper working condition.
  2. Before installation , clean out dirt or other impurities which may have collected in water pipe by allow water flow freely for a moment.
- \*\* The company reserves the right to change any of the details without prior notice.

For more information, please contact  
Technical Service Section, Tel. (662) 521-7777  
THE SIAM SANITARY FITTINGS CO., LTD.

05650

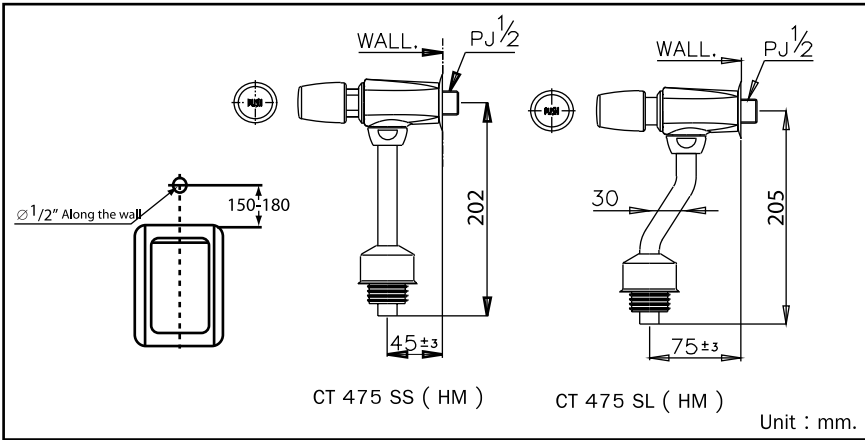
36/11 Viphavadee Rangsit Road, Sanambin, Don Muang, Bangkok 10210 Thailand

## INSTALLATION MANUAL : URINAL FLUSH VALVE : CT475SS, CT475SL

### Installation

1. Insert the cover(4) to the body(1) at the water inlet. Coil the thread with the sealed tape and tighten the body(1) with the water supply pipe size Pt $\frac{1}{2}$ ".
2. Install the rubber spud(9) at the water outlet hole of urinals.
3. Assemble the lock nut(6) and the cover(8) with the water outlet pipe( 7) respectively (see figure).
4. Install the tip of water outlet pipe( 7) with the rubber spud( 9) and then cover the rubber spud ( 8 ) by using the cover( 9).
5. Adjust the water outlet pipe( 7) to the appropriate height with the body.
6. Insert the rubber gasket(8) to the lock nut(6) and then tighten the lock nut(6) with the body(1).
7. The working pressure of water is 0.07~0.75 MPa. (0.7~7.5 Kgf/cm<sup>2</sup>)

### Water inlet pipe installation



### Troubleshooting

Problem	Check point	Solution
Leak around joints.	- Improper assembly. - The lock nut(6) is not well tightened. - The rubber gasket(5) is damaged.	- Disassemble and then reassemble (as shown in figure). - Change the new rubber gasket.
The flush valve set - stops slowly or rapidly.	- The water pressure is less than or more than 1-2 kgf/cm <sup>2</sup> .	- Adjust the <b>Water Pressure</b> .