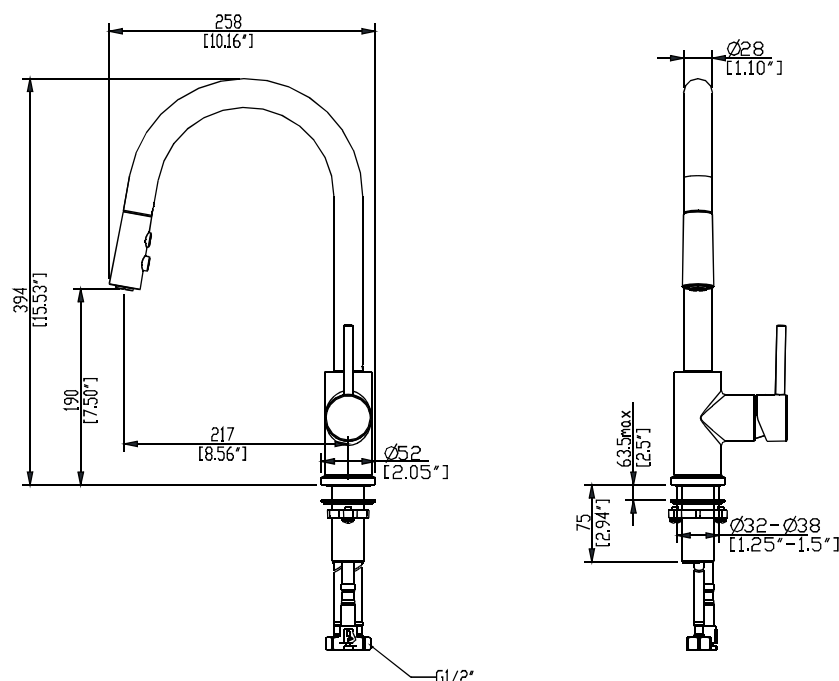


# ELEMENTi

## UNO PULL DOWN KITCHEN MIXER BLACK



■ For Reference only (unit = mm)

### SPECIFICATIONS

<b>Recommended use</b>	Domestic and hotel
<b>Colour availability</b>	Matte Black
<b>Pressure rating</b>	<b>Mains Pressure-Equal</b> Maximum operating pressure 500 KPa. Minimum operating pressure 150 Kpa. <b>Low/Unequal Pressure</b> Maximum operating pressure Cold 500 KPa. Minimum operating pressure Hot 35 Kpa.
<b>Temperature rating</b>	Maximum continuous working temperature 70°
<b>Suitable Hot Water Units</b>	Storage tank: Yes Continuous Flow: Yes Gravity Feed: Not recommended Hole Diameter: Min Ø32 /Max Ø38 Bench Thickness: Max 63.5
<b>WELS</b>	<b>Mains Pressure-Equal</b> Stars: 4 Flow rate: 6.2 L/Min



### CLEANING RECOMMENDATIONS

This product should not be cleaned with abrasive materials  
 Damage caused by any improper treatment is not covered by the  
 product warranty – refer to Warranty Conditions on the last page.

# ELEMENTi

## UNO PULL DOWN KITCHEN MIXER BLACK

### GUARANTEES

Robertson offers 5 years guarantee on ceramic cartridges and other material excluding washers, o-rings and other perishable components.

Where the product fails within the warranty period we offer a free replacement or replacement part (or nearest equivalent) or to repair the failed product.

This guarantee is transferable – it applies to the product not the purchaser provided proof or purchase details are passed on to the new owner. This guarantee does not affect your statutory rights.

Products must be installed, used and cared for in line with product guidelines, our fixing instructions and building regulations.

In addition to specific guarantees provided, all products imported and sold by Robertson are, to the extent applicable and guaranteed in accordance with the durability clauses of the New Zealand Building regulations and the Consumer Guarantees Act.

Some product warranties may be effected by misuse or local conditions eg. Adverse cleaning products. The warranty and guarantees given by Robertson may be void where repair work is carried out by persons not specifically authorised to carry out such work by Robertson.

The above guarantees apply only to products imported and sold by Robertson. These guarantees do not cover products sold by Robertson under any other agency company or brand name.

### IMPORTANT:

#### **Products must be inspected prior to installation.**

Please ensure that all products purchased from Robertson are inspected prior to installation. Any suspected defect in a product must be notified to Robertson as soon as possible after discovery. Should any defects be found do not install. Return the product to the point of purchase for a replacement. If a product is installed despite a fault having been identified prior to installation, Robertson will not accept any liability for the cost of the labour to remove and install any replacement product.

### Warranty Conditions

This warranty will apply only under all of the following conditions:

- The item has been installed by a licensed plumber
- The item has been installed as per the conditions of the recommend use
- Failure is due to a fault in the manufacture of the product
- Proof of purchase (including the date of purchase) is provided
- The installation of the product is in accordance with the instructions provided

This warranty does not cover products purchased as an ex-display without being fully checked and tested for sale by the manufacturer.

This warranty does not include faults caused by:

- Unsuitable or improper use.
- Incorrect installation or installation not in accordance with the instructions provided.
- Installation or part installation by the purchaser or any person other than a LICENSED PLUMBER.
- Normal wear and tear.
- Inadequate or complete lack of maintenance.
- Chemical, electrochemical or electrical influences.
- Harsh detergents or abrasive cleaners used on product finishes.

### CLAIM PROCEDURE

For all warranty queries customers are to contact the store where the product was purchased. These details can be found on your purchase invoice.

# ELEMENTi

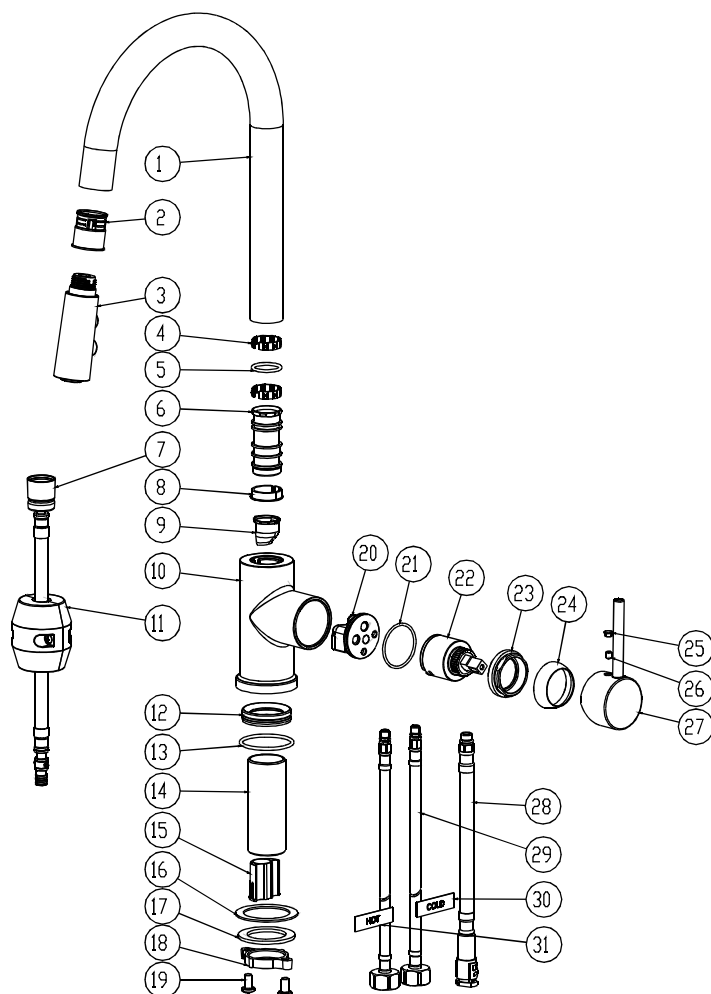
## UNO PULL DOWN KITCHEN MIXER BLACK

### INSTALLATION

#### Important Note

Mixer must be installed to the requirements of AZ/NZS 3500 by a licenced plumber. Your mixer comes to you already factory assembled and tested. We do not recommend the dismantling of any internal part of the mixer. The mixers are factory tested and sealed so as to give the best performance.

1. Please ensure pipework is clear of debris by flushing the lines prior to commencing the installation of the mixer.
2. Connect flexible hose tails to water inlet, using Pipe Sealing Tape(Figure 1).  
Mains Pressure Equal - recommend connection to hot/cold isolation valves, test operation.  
Low/Unequal - Cold - Connect in-line flow control valve (supplied).  
Recommend additional isolation valve be fitted to hot inlet (not supplied)



#### Low/Unequal Pressure Adjustment

1. Turn cold flow control valve to fully off.
2. Set the lever into mid position and full on.
3. When maximum hot water temperature is achieved.
4. Adjust cold flow control valve to desired mixed water temperature.

### WELS FLOW CONTROL

1. Mixer comes complete with low/unequal flow stream straightener factory fitted.
2. For mains pressure operation replace stream straightener with supplied regulator.

### EXPLODED VIEW

Item	Description	P/N
1	Spout	CTPT0031
2	Bushing	CTCP0498
3	Shower	ATBE0213
4	Clip	CTKP0162
5	O-Ring	CTRR0166
6	Connector	CTML0002
7	Hose	ATBP0436
8	Clip	CTKP0163
9	Bushing	CTCP0495
10	Body	CTYZ0023
11	Weight	ATBQ0618
12	Nut	CTNT0027
13	O-Ring	CTRR0001
14	Shank	CTCP0494
15	Bushing	CTWR0115
16	Washer	CTWT0053
17	Washer	CTNB0364
18	Nut	CTST0101
19	Screw	CTDN0064
20	Base Seat	CTRR0074
21	O-Ring	ATBA0161
22	Cartridge	CTKL0007
23	Bonnet	CTCP0366
24	Cover	CTCP0072
25	Handle Knob	CTST0117
26	Screw	CTHZ0281
27	Handle	ATBP0379
28	Hose	ATBP1026
29	Hose	CZL00059-00
30	Cold Hose Label	CZL00058-00
31	Hot Hose Label	

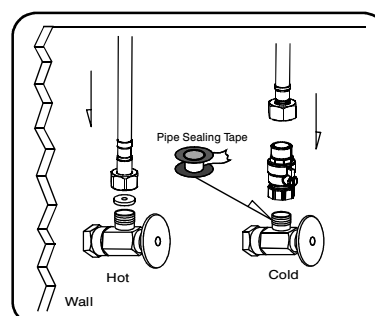


Figure 1

#### TO THE INSTALLER:

**TWISTING OR STRETCHING OF FLEXIBLE HOSES DURING INSTALLATION MAY RESULT IN FAILURE AND VOID WARRANTY ISOLATE MIXER BEFORE HYDROSTATIC TEST, FAILURE TO COMPLY WILL VOID WARRANTY. HOSES ARE PERMANENTLY FIXED TO THE BODY.**